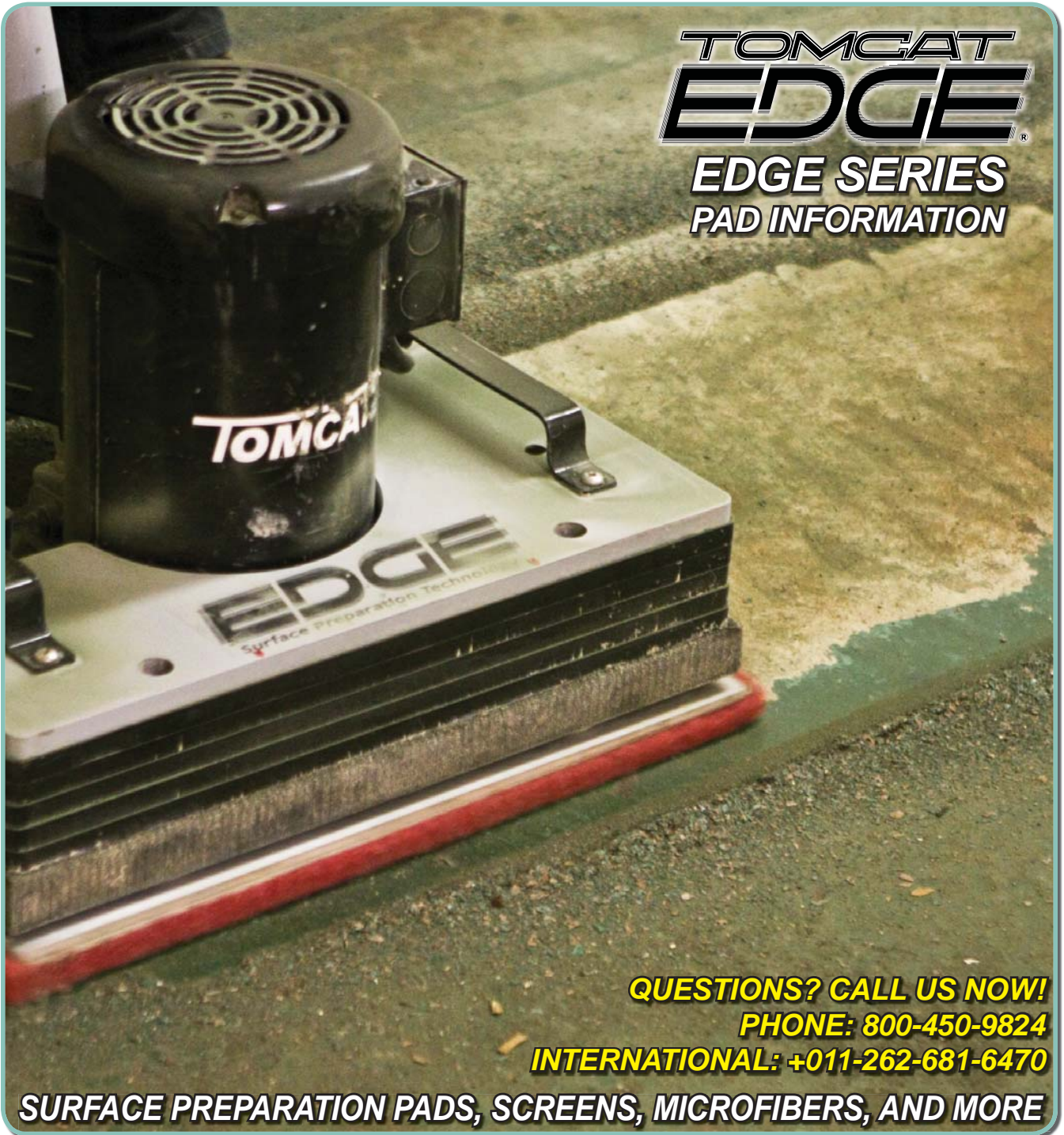


**TOMCAT
EDGE**

**EDGE SERIES
PAD INFORMATION**



QUESTIONS? CALL US NOW!

PHONE: 800-450-9824

INTERNATIONAL: +011-262-681-6470

SURFACE PREPARATION PADS, SCREENS, MICROFIBERS, AND MORE

MASTIC REMOVAL

GROUT & TILE CLEANING

MARBLE POLISHING



TABLE OF CONTENTS

SCRUBBING / STRIPPING PADS:	
MAROON ECO PREP EPP PAD	4
DOMINATOR EXTRA HEAVY DUTY STRIP PAD	5
BLACK STRIP PAD.....	6
GREEN SCRUB PAD.....	7
BLUE CLEANER PAD.....	8
RED BUFF PAD	9
POLISHING / BUFFING PADS:	
WHITE POLISH PAD	10
REMOVER BURNISHING PAD	11
PORKO BURNISHING PAD	12
WHITE MAGIC PAD.....	13
SPECIALTY PADS:	
TILE / GROUT RENOVATOR PAD	14
MICROFIBER PAD	15
ABRADER PLATE.....	16
VELCRO PAD	17
HYBRID NYLON BRUSH.....	18
SAND SCREENS:	
60 GRIT SAND SCREEN.....	19
80 GRIT SAND SCREEN.....	20
100 GRIT SAND SCREEN.....	21
120 GRIT SAND SCREEN.....	22
150 GRIT SAND SCREEN.....	23
SAND PAPER:	
20 GRIT SAND PAPER.....	24
36 GRIT SAND PAPER.....	25
60 GRIT SAND PAPER.....	26
80 GRIT SAND PAPER.....	27
100 GRIT SAND PAPER.....	28
WHITE DRIVER PAD	29
EDGE DIAMOND STRIPS:	
30 GRIT DIAMOND STRIPS.....	30
50 GRIT DIAMOND STRIPS.....	31
100 GRIT DIAMOND STRIPS.....	32
200 GRIT DIAMOND STRIPS.....	33
400 GRIT DIAMOND STRIPS.....	34
800 GRIT DIAMOND STRIPS.....	35
1500 GRIT DIAMOND STRIPS.....	36
3000 GRIT DIAMOND STRIPS.....	37
EDGE DIAMOND POLISHING PADS:	
800 GRIT DIAMOND POLISHING PAD	38
1500 GRIT DIAMOND POLISHING PAD	39
3000 GRIT DIAMOND POLISHING PAD	40
6000 GRIT DIAMOND POLISHING PAD	41
EXTRAS:	
EZ FINISH APPLICATOR & MARBLE PASTE.....	42



MAROON ECO PREP EPP PAD:

A thin pad to remove floor finish without the use of harsh chemicals. Excellent for repairing acrylic or urethane finishes for recoating. Use WET or DRY on VCT and Wood. (10/CS)

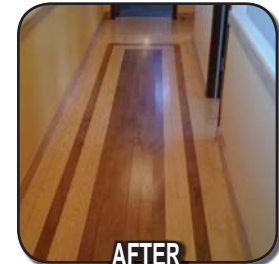
14" x 20" - PART#: EDGE-4007
 14" x 28" - PART#: EDGE-4056
 14" x 32" - PART#: EDGE-5007

TYPES OF FLOORS:

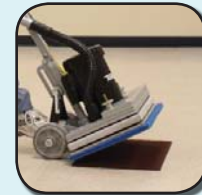
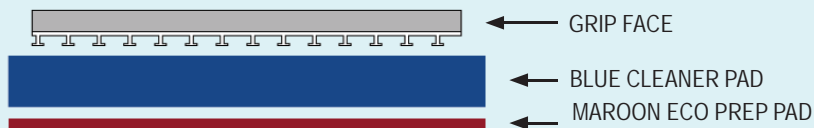
VCT

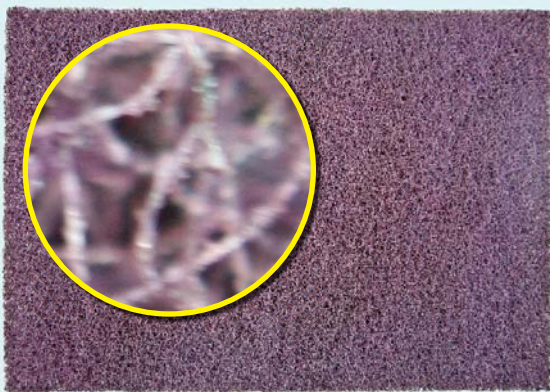


WOOD



HOW TO PLACE ONTO MACHINE:





DOMINATOR EXTRA HEAVY DUTY STRIP PAD:

Extra aggressive stripping pad for the heaviest duty strip-ping jobs. Open weave pad construction. Use WET and/or with chemicals. (5/CS)

14" x 20" - PART#: EDGE-4006

14" x 28" - PART#: EDGE-4055

14" x 32" - PART#: EDGE-5006

TYPES OF FLOORS:

VGT



BEFORE

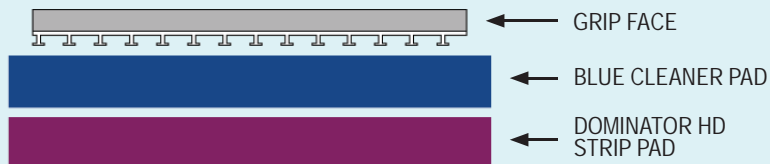


DURING



AFTER

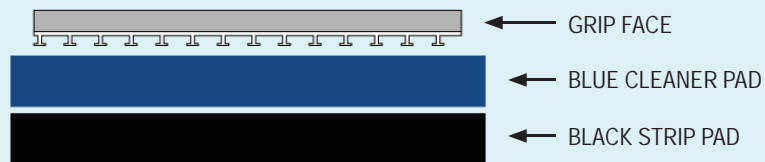
HOW TO PLACE ONTO MACHINE:

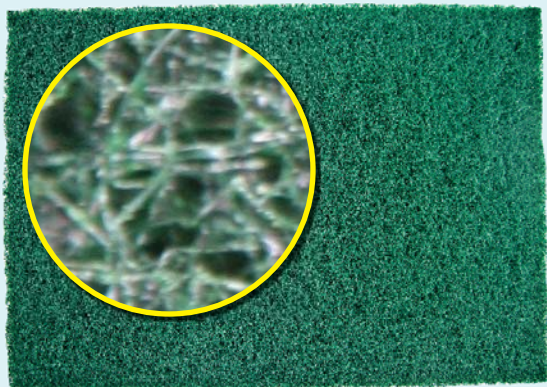


**BLACK STRIP PAD:**

Designed for heavy duty wet stripping typically with chemical stripper. Aggressively removes floor finish and dirt. Cleans down to original surface. Use WET on VCT and Tile. (5/CS)

14" x 20" - PART#: EDGE-4001
14" x 28" - PART#: EDGE-4050
14" x 32" - PART#: EDGE-5001

TYPES OF FLOORS:**HOW TO PLACE ONTO MACHINE:**



GREEN SCRUB PAD:

For heavy duty scrubbing or light stripping. Aggressively removes dirt and scuff marks from heavily soiled floors. Use WET on VCT and Tile. (5/CS)

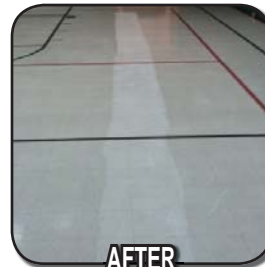
14" x 20" - **PART#: EDGE-4002**

14" x 28" - **PART#: EDGE-4051**

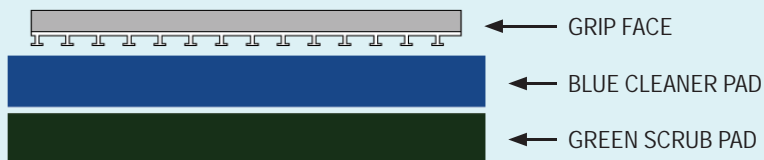
14" x 32" - **PART#: EDGE-5002**

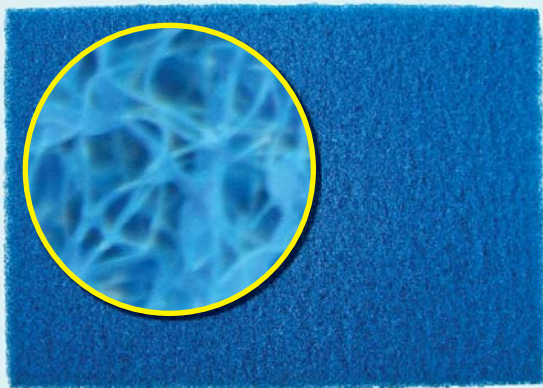
TYPES OF FLOORS:

VCT



HOW TO PLACE ONTO MACHINE:



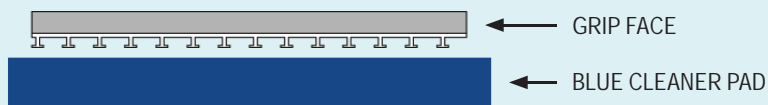
**BLUE CLEANER PAD:**

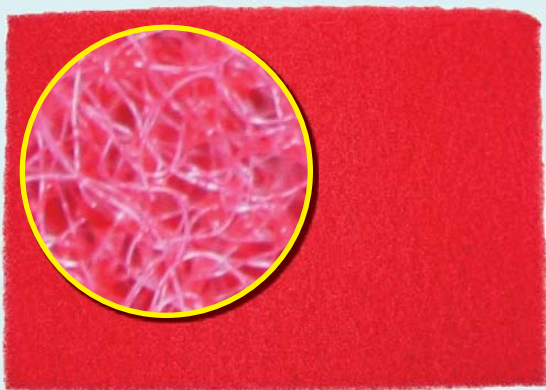
For scrubbing or heavy duty spray cleaning. Removes heavy dirt and scuff marks from floor surface. Use WET on VCT and Tile.(5/CS)

14" x 20" - **PART#: EDGE-4003**

14" x 28" - **PART#: EDGE-4052**

14" x 32" - **PART#: EDGE-5009**

TYPES OF FLOORS:**VCT****HOW TO PLACE ONTO MACHINE:**



RED BUFF PAD:

Mildly aggressive. Removes light scuff marks and dirt while producing a high gloss surface. Use WET or DRY on VCT and Tile. (5/CS)

14" x 20" - **PART#: EDGE-4004**

14" x 28" - **PART#: EDGE-4053**

14" x 32" - **PART#: EDGE-5004**

TYPES OF FLOORS:

VCT



BEFORE

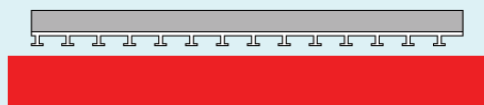


DURING



AFTER

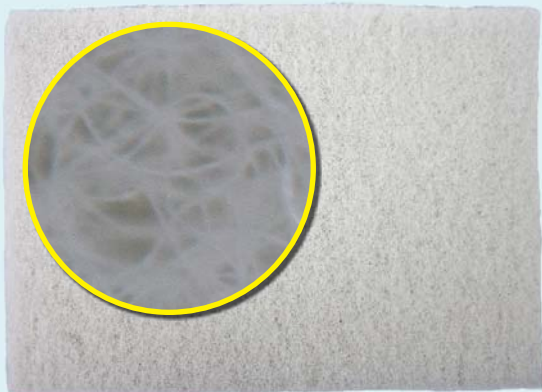
HOW TO PLACE ONTO MACHINE:



← GRIP FACE

← RED BUFF PAD





WHITE POLISH PAD:

Extra fine pad for polishing clean dry floors. Use WET with a fine water mist to produce a high gloss "wet look" or Use DRY on VCT and Tile. (5/CS)

14" x 20" - PART#: EDGE-4005

14" x 28" - PART#: EDGE-4054

14" x 32" - PART#: EDGE-5005

TYPES OF FLOORS:

VCT



BEFORE

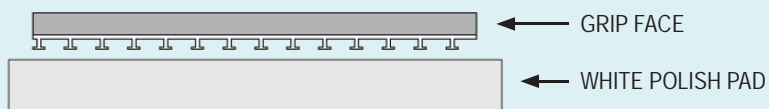


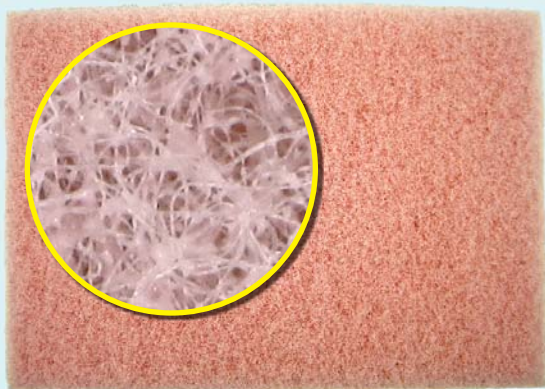
DURING



AFTER

HOW TO PLACE ONTO MACHINE:





REMOVER BURNISHING PAD:

Designed for daily burnishing on soft to medium hard finishes. Removes black heel or scuff marks. Restores high gloss shine without scratching or deteriorating the finish.
Use WET. (5/CS)

14" x 20" - PART#: EDGE-4008

14" x 28" - PART#: EDGE-4057

TYPES OF FLOORS:

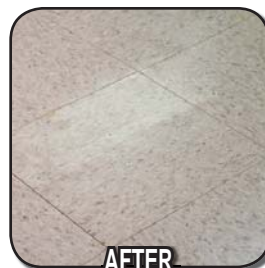
VCT



BEFORE

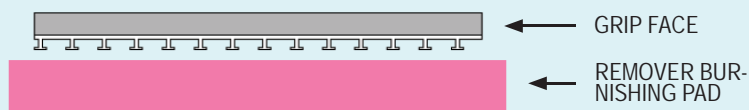


DURING



AFTER

HOW TO PLACE ONTO MACHINE:



← GRIP FACE

← REMOVER BUR-NISHING PAD





PORKO BURNISHING PAD:

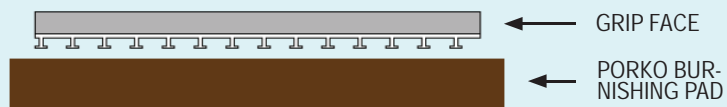
Hog Hair Natural fibers produce wet look finish. Use dry or with spray buff solution. For minimal burnishing on hard finishes. Use WET or DRY on VCT, Concrete, and more. (5/CS)

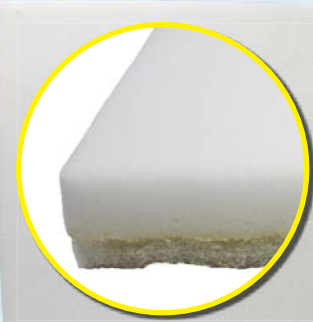
14" x 20" - PART#: EDGE-4017

TYPES OF FLOORS:



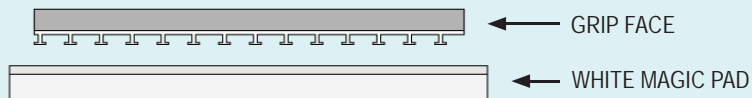
HOW TO PLACE ONTO MACHINE:

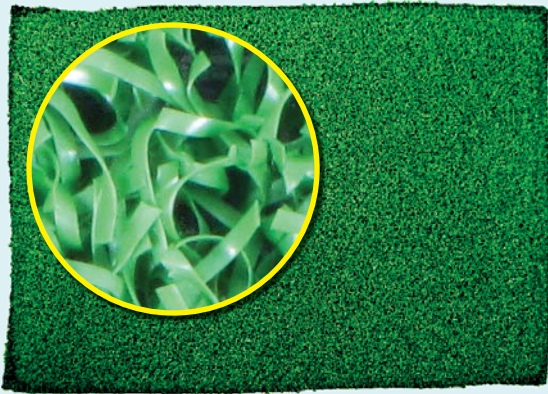


**WHITE MAGIC PAD:**

Designed to remove black heel or scuff marks, stains, as well as tire marks. Restores high gloss shine without scratching or deteriorating the finish. Use WET and on VCT ONLY. (5/CS)

14" x 20" - **PART#: EDGE-4037**

HOW TO PLACE ONTO MACHINE:



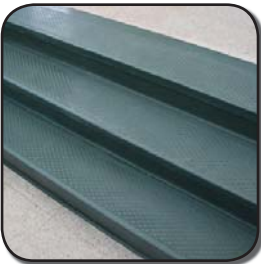
TILE / GROUT RENOVATOR PAD:

Chemicals required, and used to cleaned grouted tile, ter-razzo, poured non-slip floors and other uneven floors that typically require a brush. Use WET on several surfaces.

14" x 20" - PART#: EDGE-4018

TYPES OF FLOORS:

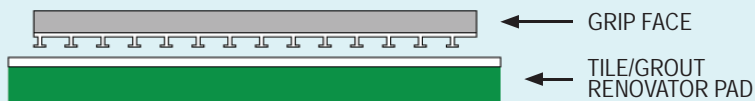
RUBBER

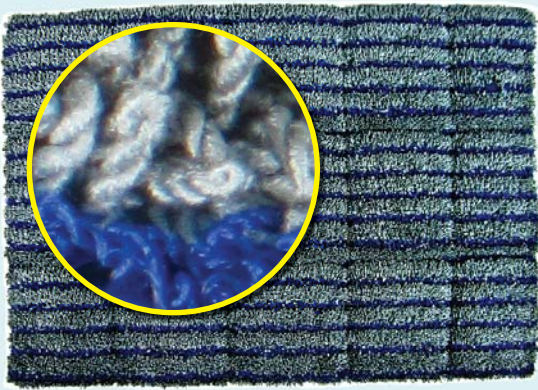


GROUTED TILE



HOW TO PLACE ONTO MACHINE:

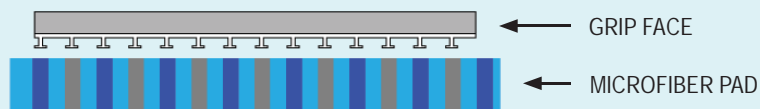


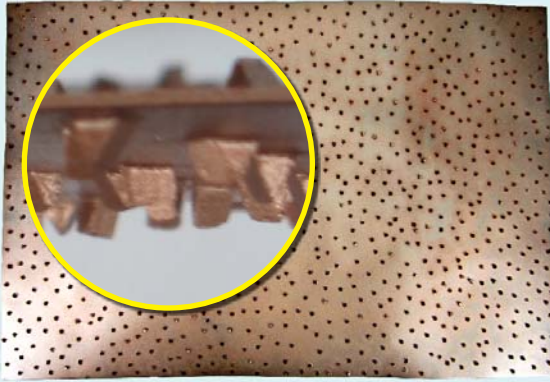
**MICROFIBER PAD:**

This pad works well on Rubber floors where one would be hesitant to use a tough grit brush to clean the floor. Works especially well on irregularly surfaced Rubber flooring.

Use WET.

14" x 20" - **PART#: EDGE-4036**

HOW TO PLACE ONTO MACHINE:



ABRADER PLATE:

A steel abradar tool that is covered with carbide tungsten chips, and designed to remove glue and paint on concrete without the need for harsh chemicals. Use DRY on concrete.

13" x 19" - PART#: EDGE-4011

TYPES OF FLOORS:

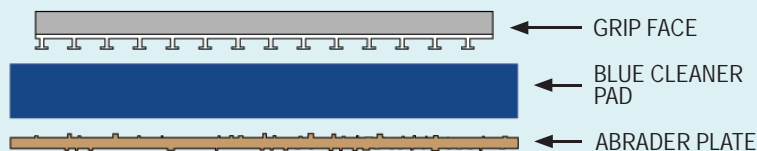
MASTIC

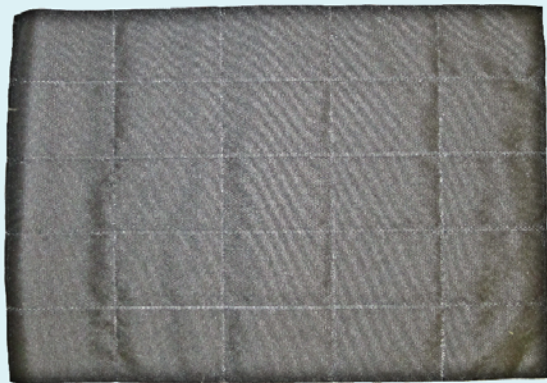


PAINT



HOW TO PLACE ONTO MACHINE:



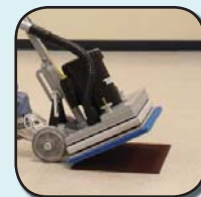
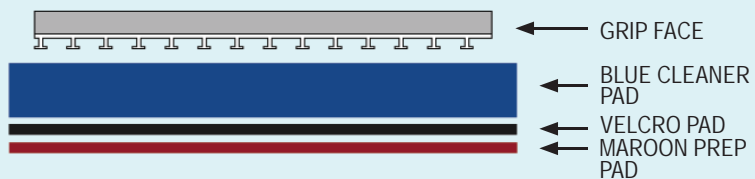
**VELCRO PAD:**

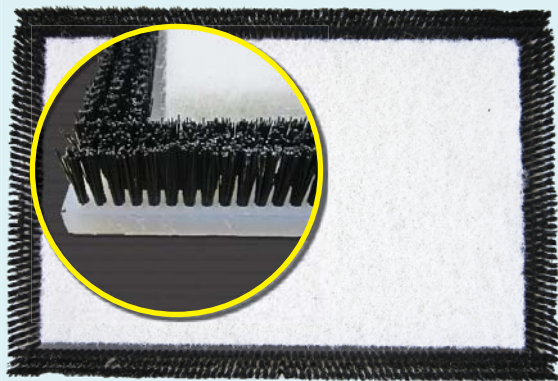
Used to hold the Prep Pad to the Spacer Pad. Use DRY only.

13" x 19" - **PART#: 300-4023**

13" x 27" - **PART#: 300-4024**

13" x 31" - **PART#: 300-4025**

HOW TO PLACE ONTO MACHINE:



HYBRID NYLON BRUSH:

Brush designed especially for getting into grout and cracks with the thick, nylon fibers. Requires a special sized inside pad for operation. Use WET or DRY.

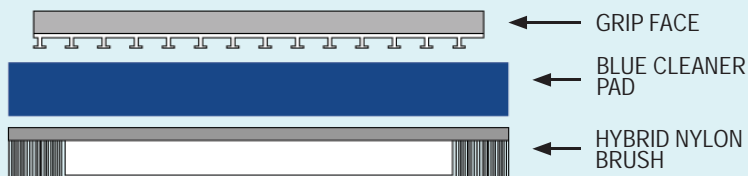
14" x 20" - **PART#: 300-821N**

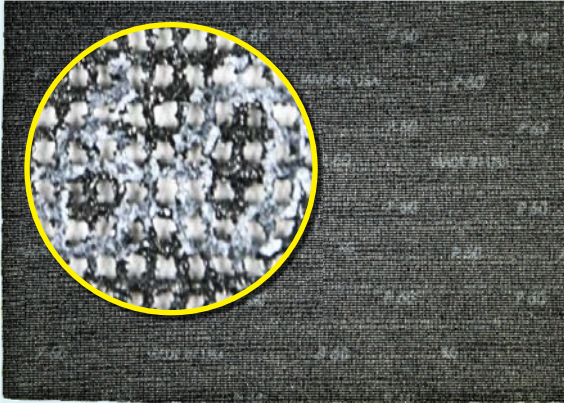
Inside Pad Size - 10 ¹/₄" x 16 ¹/₄" - **PART#: EDGE-3005**

GROUTED TILE



HOW TO PLACE ONTO MACHINE:





60 GRIT SAND SCREEN:

Sandscreens are ideal for finish removal or repair of wood floor surfaces, such as gym floors. Can be used to repair painted floor surfaces. Both sides of screen can be used. Use WET or DRY on wood or painted concrete. (10/CS)

13" x 19" - PART#: EDGE-4020

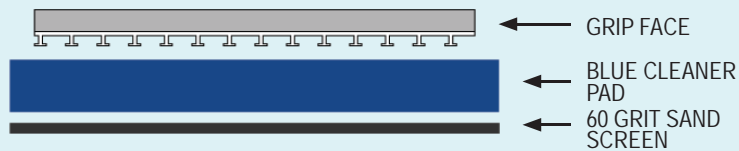
14" x 20" - PART#: EDGE-4026

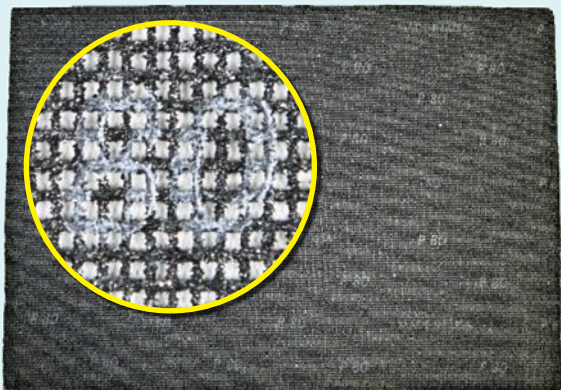
14" x 28" - PART#: EDGE-4059

TYPES OF FLOORS:



HOW TO PLACE ONTO MACHINE:





80 GRIT SAND SCREEN:

Sandscreens are ideal for finish removal or repair of wood floor surfaces, such as gym floors. Can be used to repair painted floor surfaces. Both sides of screen can be used. Use WET or DRY on wood or painted concrete. (10/CS)

13" x 19" - PART#: EDGE-4021

14" x 20" - PART#: EDGE-4027

14" x 28" - PART#: EDGE-4060

TYPES OF FLOORS:

WOOD



BEFORE

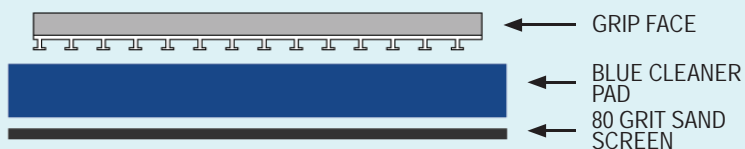


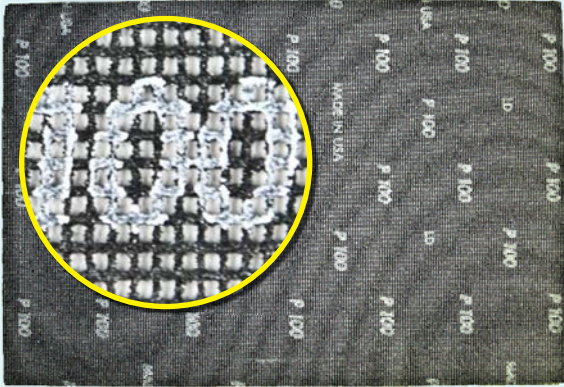
DURING



AFTER

HOW TO PLACE ONTO MACHINE:





100 GRIT SAND SCREEN:

Sandscreens are ideal for finish removal or repair of wood floor surfaces, such as gym floors. Can be used to repair painted floor surfaces. Both sides of screen can be used. Use WET or DRY on wood or painted concrete. (10/CS)

13" x 19" - PART#: EDGE-4022
 14" x 20" - PART#: EDGE-4028
 14" x 28" - PART#: EDGE-4061
 14" X 32" - PART#: EDGE-5028

TYPES OF FLOORS:

WOOD



BEFORE

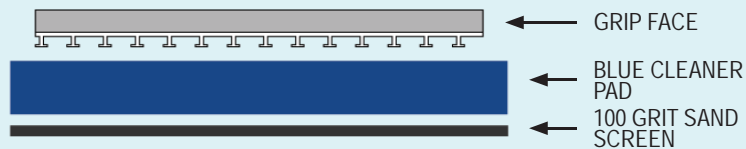


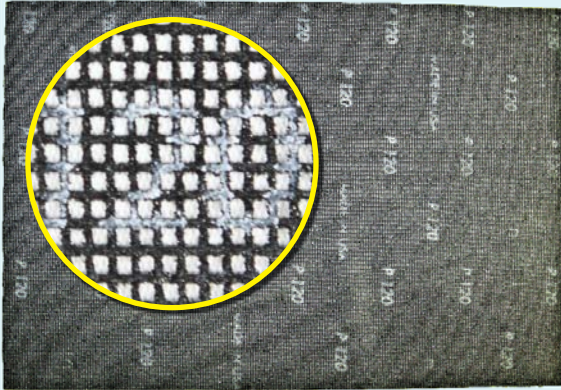
DURING



AFTER

HOW TO PLACE ONTO MACHINE:





120 GRIT SAND SCREEN:

Sandscreens are ideal for finish removal or repair of wood floor surfaces, such as gym floors. Can be used to repair painted floor surfaces. Both sides of screen can be used. Use WET or DRY on wood or painted concrete. (10/CS)

13" x 19" - **PART#: EDGE-4023**

14" x 20" - **PART#: EDGE-4029**

14" x 28" - **PART#: EDGE-4062**

14" X 32" - **PART#: EDGE-5029**

TYPES OF FLOORS:

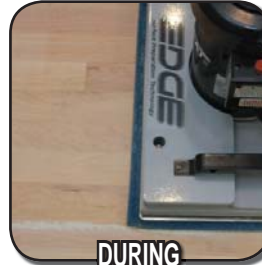
WOOD



BEFORE

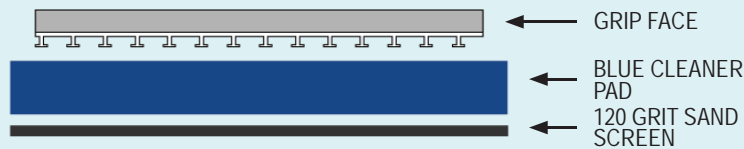


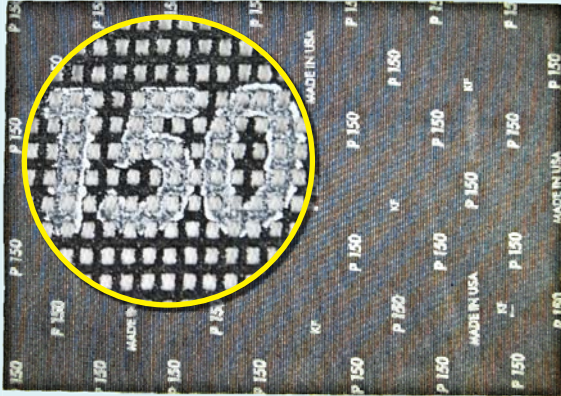
DURING



AFTER

HOW TO PLACE ONTO MACHINE:





150 GRIT SAND SCREEN:

Sandscreens are ideal for finish removal or repair of wood floor surfaces, such as gym floors. Can be used to repair painted floor surfaces. Both sides of screen can be used. Use WET or DRY on wood or painted concrete. (10/CS)

13" x 19" - PART#: EDGE-4024

14" x 20" - PART#: EDGE-4030

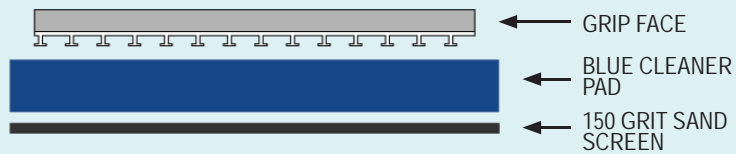
14" x 28" - PART#: EDGE-4063

TYPES OF FLOORS:

WOOD



HOW TO PLACE ONTO MACHINE:





20 GRIT SAND PAPER:

Our Sand Paper comes in a variety of grits to tackle any wood floor needs. Use these for smoothing wood surfaces without chemicals. (20/CS)

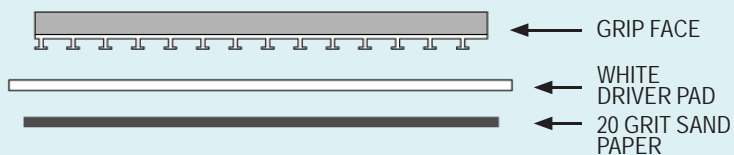
13" x 19" - PART#: EDGE-4031

TYPES OF FLOORS:

WOOD



HOW TO PLACE ONTO MACHINE:





36 GRIT SAND PAPER:

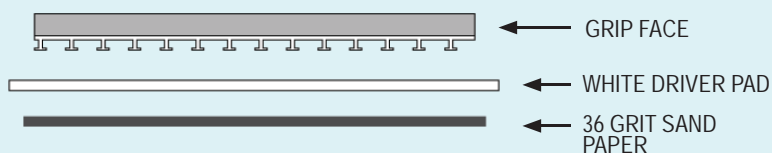
Our Sand Paper comes in a variety of grits to tackle any wood floor needs. Use these for smoothing wood surfaces without chemicals. (20/CS)

13" x 19" - PART#: EDGE-4032

TYPES OF FLOORS:



HOW TO PLACE ONTO MACHINE:





60 GRIT SAND PAPER:

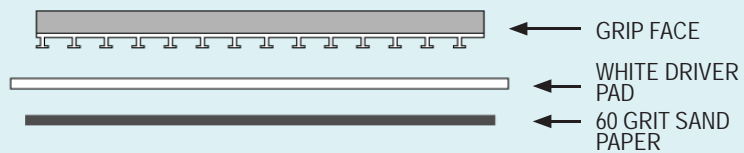
Our Sand Paper comes in a variety of grits to tackle any wood floor needs. Use these for smoothing wood surfaces without chemicals. (20/CS)

13" x 19" - PART#: EDGE-4033

TYPES OF FLOORS:



HOW TO PLACE ONTO MACHINE:





80 GRIT SAND PAPER:

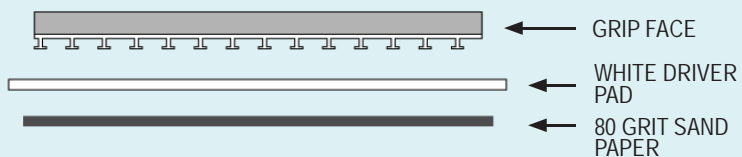
Our Sand Paper comes in a variety of grits to tackle any wood floor needs. Use these for smoothing wood surfaces without chemicals. (20/CS)

13" x 19" - PART#: EDGE-4034

TYPES OF FLOORS:



HOW TO PLACE ONTO MACHINE:



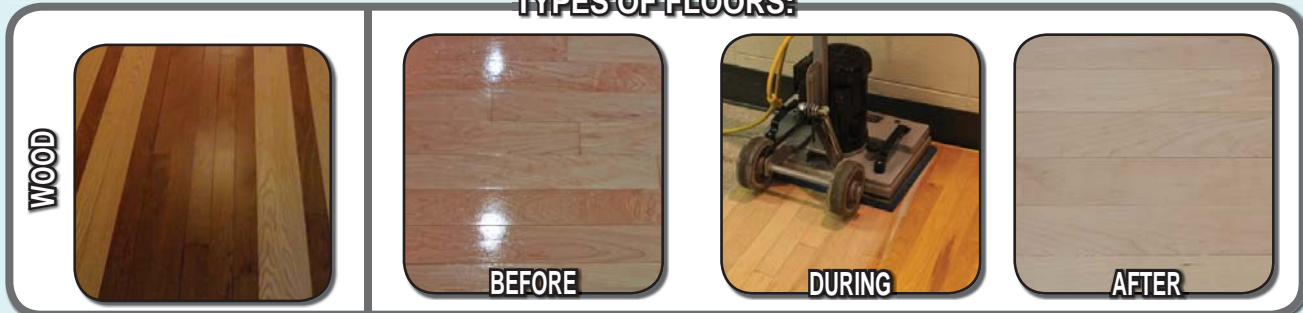


100 GRIT SAND PAPER:

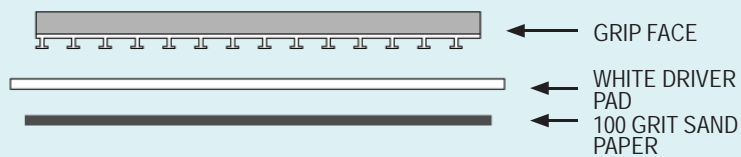
Our Sand Paper comes in a variety of grits to tackle any wood floor needs. Use these for smoothing wood surfaces without chemicals. (20/CS)

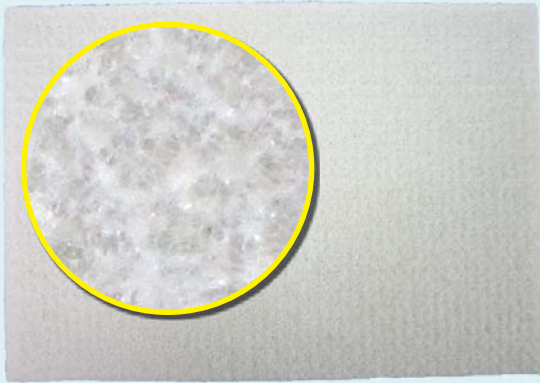
13" x 19" - PART#: EDGE-4035

TYPES OF FLOORS:



HOW TO PLACE ONTO MACHINE:





WHITE DRIVER PAD:

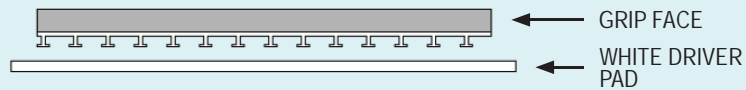
This pad is placed between the Tomcat EDGE® machine's grip face and the Sand Paper (13x19), used as a spacer pad when using the EDGE Diamonds Polishing System, used as a Marble Paste application pad, and used as the Granite Powder application pad. (10/CS)

13" x 19" - **PART#: EDGE-4019**

14" x 20" - **PART#: EDGE-4025**

14" x 28" - **PART#: EDGE-4058**

HOW TO PLACE ONTO MACHINE:





30 GRIT DIAMOND STRIPS:

The first step for your stone polishing, the orange 30 grit diamond strips are tough enough to handle the most stubborn scratches. The 30 grit diamond strips will shoulder the brunt of the work for removing high spots, so square footage will range from 100-3000 square feet. Four bars of each grit of diamonds are required for stone polishing.

Pack of 4 Strips - **PART#: 300-30GRIT4**



TYPES OF FLOORS:

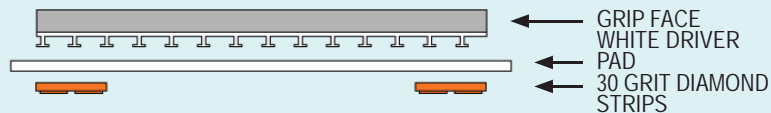
MARBLE



TERRAZZO



HOW TO PLACE ONTO MACHINE:





50 GRIT DIAMOND STRIPS:

The second step for your stone polishing, the Green 50 grit diamond strips are tough enough to handle the most stubborn scratches. The 50 grit diamond strips will perform nearly the same amount of work the 30 grit does, so square footage will range from 100-3000 square feet. Four bars of each grit of diamonds are required for stone polishing.



Pack of 4 Strips - **PART#: 300-50GRIT4**

TYPES OF FLOORS:

MARBLE



BEFORE



DURING



AFTER

TERRAZZO



BEFORE

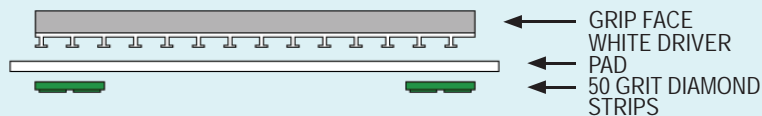


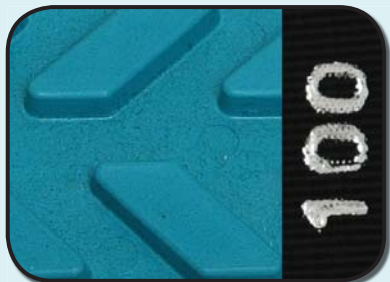
DURING



AFTER

HOW TO PLACE ONTO MACHINE:





100 GRIT DIAMOND STRIPS:

The 100 grit Aqua diamonds are used for the third step of the eight step process. These should last a little longer on surfaces prepped with the 30 and 50 grit diamonds. Square footage estimates are approximately 3000-6000 square feet. Four bars of each grit of diamonds are required for stone polishing.

Pack of 4 Strips - **PART#: 300-100GRIT4**

TYPES OF FLOORS:

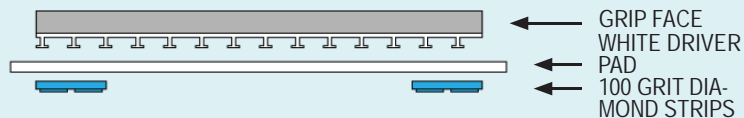
MARBLE



TERRAZZO



HOW TO PLACE ONTO MACHINE:





200 GRIT DIAMOND STRIPS:

You should see a noticeable difference on your surface once you've used the Dark Brown 200 grit diamonds. A decrease in the muddy residue should be noticed using this diamond. Thanks to the work of the other grits, you should be able to do approximately 4000-6000 square feet. Four bars of each grit of diamonds are required for stone polishing.

Pack of 4 Strips - **PART#: 300-200GRIT4**

TYPES OF FLOORS:

MARBLE



BEFORE



DURING



AFTER

TERRAZZO



BEFORE

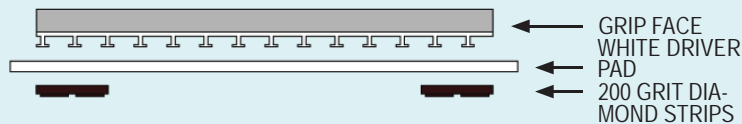


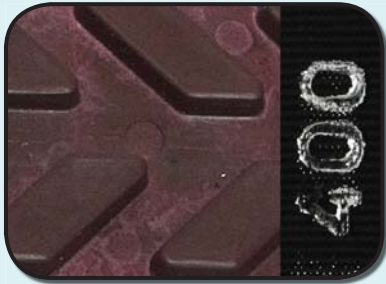
DURING



AFTER

HOW TO PLACE ONTO MACHINE:





400 GRIT DIAMOND STRIPS:

The 400 grit Burgundy diamonds mark the midway point of the polishing system and will begin to leave a noticeable shine on your surface. You should be able to do approximately 4000-6000 square feet with this grit. Four bars of each grit of diamonds are required for stone polishing.

Pack of 4 Strips - **PART#: 300-400GRIT4**

TYPES OF FLOORS:

MARBLE



BEFORE



DURING



AFTER

TERRAZZO



BEFORE

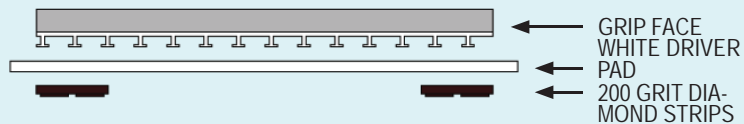


DURING



AFTER

HOW TO PLACE ONTO MACHINE:





800 GRIT DIAMOND STRIPS:

Once you use the Light Yellow 800 grit diamonds, the surface should be extremely smooth and most scratches disappearing upon close inspection. You should be able to do approximately 4000-6000 square feet with this grit. Four bars of each grit of diamonds are required for stone polishing.



Pack of 4 Strips - **PART#: 300-800GRIT4**

TYPES OF FLOORS:

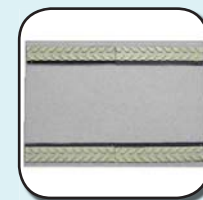
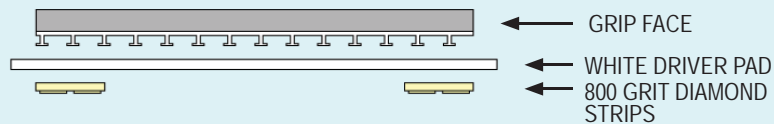
MARBLE



TERRAZZO



HOW TO PLACE ONTO MACHINE:





1500 GRIT DIAMOND STRIPS:

The light Blue 1500 grit diamonds marks the seventh step of polishing . You should be able to do approximately 4000-6000 square feet with this grit. Four bars of each grit of diamonds are required for stone polishing.



Pack of 4 Strips - **PART#: 300-1500GRIT4**

TYPES OF FLOORS:

TERRAZZO



BEFORE

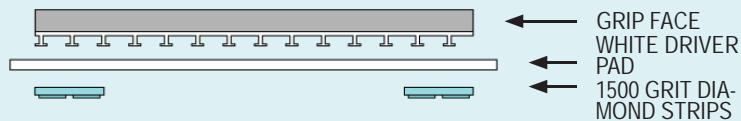


DURING



AFTER

HOW TO PLACE ONTO MACHINE:





3000 GRIT DIAMOND STRIPS:

The ultra-fine Tan 3000 grit diamonds are the final diamonds needed for polishing. You should be able to do approximately 4000-6000 square feet with this grit. Four bars of each grit of diamonds are required for stone polishing.



Pack of 4 Strips - **PART#: 300-3000GRIT4**

TYPES OF FLOORS:

TERRAZZO



BEFORE

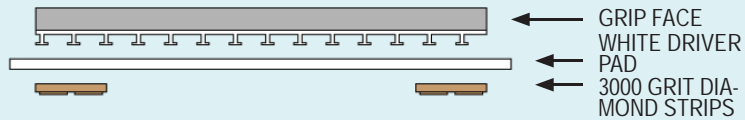


DURING



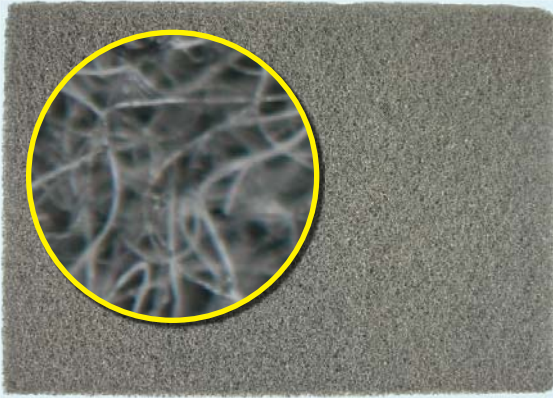
AFTER

HOW TO PLACE ONTO MACHINE:



← GRIP FACE
← WHITE DRIVER
PAD
← 3000 GRIT DIA-
MOND STRIPS





800 GRIT DIAMOND POLISHING PAD:

Diamond Pads encapsulate and hold soil in suspension for removal, leaving the floor clean and free of solid particles. Additionally, metal silicates in Diamond Pads provide ongoing repair to gloss-distorting scratches and abrasion from daily wear. (5/CS)

14" x 20" - PART#: EDGE-4002

14" x 28" - PART#: EDGE-4051

14" x 32" - PART#: EDGE-5002

TYPES OF FLOORS:

TERRAZZO



BEFORE



DURING



AFTER

CONCRETE



BEFORE

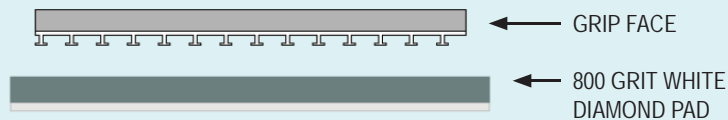


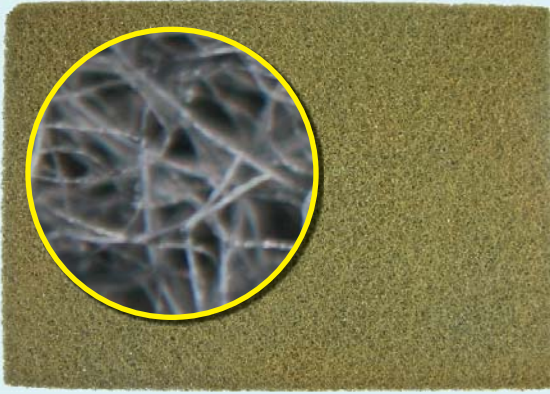
DURING



AFTER

HOW TO PLACE ONTO MACHINE:





1500 GRIT DIAMOND POLISHING PAD:

Diamond Pads encapsulate and hold soil in suspension for removal, leaving the floor clean and free of solid particles. Additionally, metal silicates in Diamond Pads provide ongoing repair to gloss-distorting scratches and abrasion from daily wear. (2/CS)

14" x 20" - **PART#: EDGE-4002**

14" x 28" - **PART#: EDGE-4051**

14" x 32" - **PART#: EDGE-5002**

TYPES OF FLOORS:

TERRAZZO



BEFORE



DURING



AFTER

CONCRETE



BEFORE

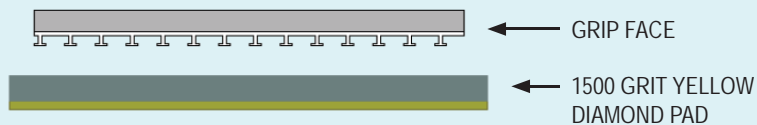


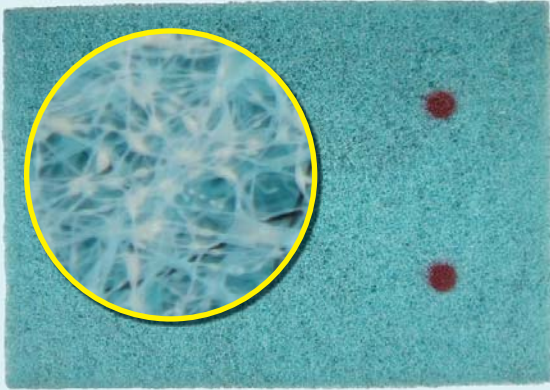
DURING



AFTER

HOW TO PLACE ONTO MACHINE:





3000 GRIT DIAMOND POLISHING PAD:

Diamond Pads encapsulate and hold soil in suspension for removal, leaving the floor clean and free of solid particles. Additionally, metal silicates in Diamond Pads provide ongoing repair to gloss-distorting scratches and abrasion from daily wear. (5/CS)

14" x 20" - **PART#: EDGE-4002**

14" x 28" - **PART#: EDGE-4051**

14" x 32" - **PART#: EDGE-5002**

TYPES OF FLOORS:

TERRAZZO



BEFORE



DURING



AFTER

CONCRETE



BEFORE

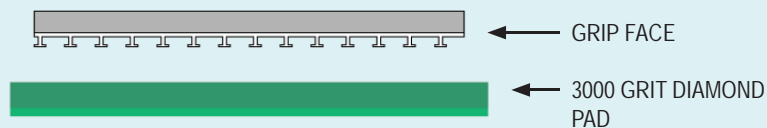


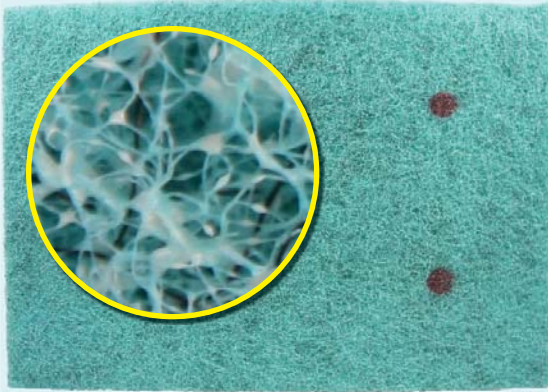
DURING



AFTER

HOW TO PLACE ONTO MACHINE:





6000 GRIT DIAMOND POLISHING PAD:

Diamond Pads encapsulate and hold soil in suspension for removal, leaving the floor clean and free of solid particles. Additionally, metal silicates in Diamond Pads provide ongoing repair to gloss-distorting scratches and abrasion from daily wear. (5/CS)

14" x 20" - PART#: EDGE-4002

14" x 28" - PART#: EDGE-4051

14" x 32" - PART#: EDGE-5002

TYPES OF FLOORS:

TERRAZZO



BEFORE



DURING



AFTER

CONCRETE



BEFORE

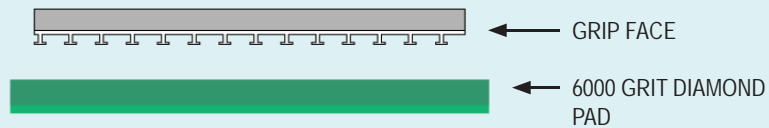


DURING



AFTER

HOW TO PLACE ONTO MACHINE:





EZ FINISH APPLICATOR:

Lay floor finish with a simple and productive EZ Applicator. It holds 5 quarts of your favorite finish, and dispenses it over a quality microfiber mop head. It's aluminum construction makes it lightweight and easy to control for consistent results.

18" - PART#: EDGE-4010

24" - PART#: EDGE-4040



PAD FOR EZ APPLICATOR:

18" - PART#: EDGE-4010P

24" - PART#: EDGE-4040P



MARBLE PASTE:

Marble paste is the paste needed to Polish your Marble floors with your EDGE HD machine. This polish should stay on your floor between up to 5 minutes MAX.

10 lb. - PART#: 300-10PASTE

25 lb. - PART#: 300-25PASTE

